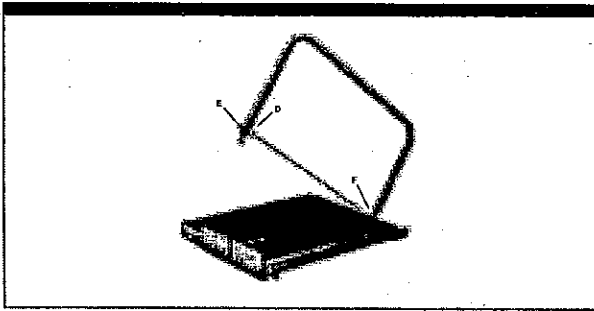


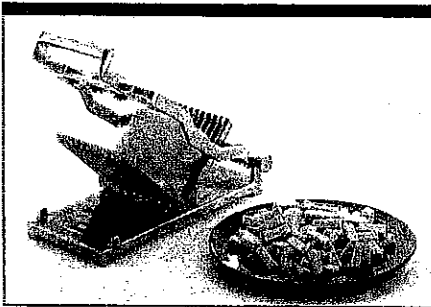
CubeKing™ Parts

Diagram Letter	Cat. No.	Description
A	1817	3/4" Slice - Cutting Bow Assembly
A	1818	5/8" Slice - Cutting Bow Assembly
B	1819	Frame & Support Assembly
C	1820	Pivot Pin Assembly



Cheese Blocker™ Parts

Diagram Letter	Cat. No.	Description
D	1839	Eye Bolt (pkg of 4)
E	1840	Wing Nut (pkg of 6)
F	1841	Screw (pkg of 4)
Not Shown	1824	Brush



Lincoln® Redco® CubeKing™

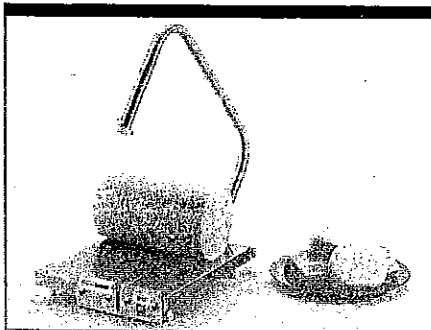


Turn out uniform cheese cubes, sticks, square blocks and rectangular blocks in record time with the Redco® CubeKing™. Your choice of slicing arm cuts mozzarella, Monterrey Jack, Cheddar, Muenster, Swiss and American.

- NSF Listed
- Produces uniform cheese cubes, sticks, and square and rectangular blocks

Cube King™

Cat. No.	Description	Case Pack	Ctn. C.F.	Ctn. Wgt. Lbs.	Ctn. C.M.	Ctn. Wgt. Kgs.
1811	Cube King, 3/4" Cut Cube or Slice	1	0.34	4.2	0.01	1.9
1812	Cube King, 5/8" Cut Cube or Slice	1	0.34	4.2	0.01	1.9
1813	Cube King, 3/4" and 5/8" Cut	1	0.34	5.1	0.01	2.3
1823	Cube King Replacement Wire Kit	1	0.00	1.0	0.00	0.5



Lincoln® Redco® Cheese Blocker™

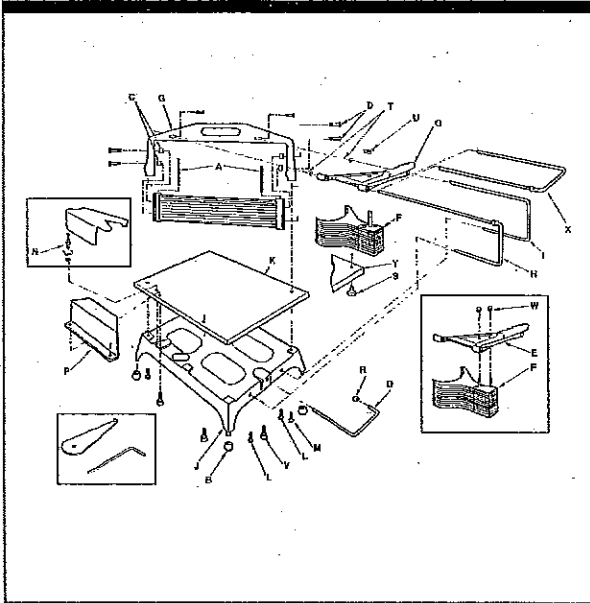


The Redco® Cheese Blocker™ will accommodate blocks up to 40 pounds and wheels up to 35 pounds. Preparing cheese for cubing, slicing and shredding has never been this fast and easy.

- NSF Listed
- Prepare bulk cheese for cubing, slicing, shredding and packaging

Cheese Blocker™

Cat. No.	Description	Case Pack	Ctn. C.F.	Ctn. Wgt. Lbs.	Ctn. C.M.	Ctn. Wgt. Kgs.
1837	Cheese Blocker	1	2.35	11.0	0.07	5.0
1838	Cheese Blocker Replacement Wire Kit	1	0.00	1.0	0.00	0.5



Tomato Pro/Econo Pro Parts

Diagram Letter	Cat. No.	Description
A	047	Blade Block Pin
B	060	Rubber Foot (Old Style)
B	303	Rubber Foot, Deep (New Models)
C	0658	Rubber Seal (NSF Models)
D	0660	Blade Block Screw
D	0674	Blade Block Bolts
E	0661*	Pusher Head Casting (Old Style)
F	0662	3/16" & 3/8" Pusher Head, Finger & Spacer
F	0663	1/4" Pusher Head Finger & Spacer
G	0664	Bridge Casting
H	0666L	Left Guide Rod
I	0666R	Right Guide Rod
J	0667	Base Casting
K	0670	Platform- for Tomato Pro models w/ Safety Guard
K	0671	Platform
K	0686	Platform (Econo Pro w/ Safety Guard)
L	0673	Bridge Casting Set Screw
M	0676	Bridge to Main Frame Retaining Screw
N	0679	Pivot Post, Safety Guard (Old Style)
O	0680	Positive Stop Pivot Arm
P	0682	Safety Guard Assembly, (New Style Tomato Pro)
P	0684	Safety Guard, (New Style Econo Pro)
Q	0687	Pusher Head Casting (NSF Models)
R	0688	End Bumper, Positive Stop
S	2319	Rubber Foot (Econo Pro)
T	305	"O" Ring
U	356	Wing Nut, (New Style Pusher Head)
V	369211	Thumb Screw
W	519	Acorn Nut, (Old Style Pusher Head)
X	EC 0666	Guide Rod (Econo Pro ONLY)
Y	EC 0671	Platform (Econo Pro ONLY)

Tomato Pro with Straight Blades

Cat. No.	Description	Blade Assembly	Case Pack	Ctn. C.F.	Ctn. Wgt. Lbs.	Ctn. C.M.	Ctn. Wgt. Kgs.
0643N	Tomato Pro, 3/16" Cut, Straight Blades	0653	1	1.20	12.8	0.04	5.8
0644N	Tomato Pro, 1/4" Cut, Straight Blades	0654	1	1.20	12.6	0.04	5.7
0646N	Tomato Pro, 3/8" Cut, Straight Blades	0656	1	1.28	12.7	0.04	5.8
0643SGN	Tomato Pro, 3/16" Cut, Straight Blades w/ Safety Guard	0653	1	1.20	13.3	0.04	6.0
0644SGN	Tomato Pro, 1/4" Cut, Straight Blades w/ Safety Guard	0654	1	1.20	12.9	0.04	5.9

Tomato Pro with Scalloped Blades

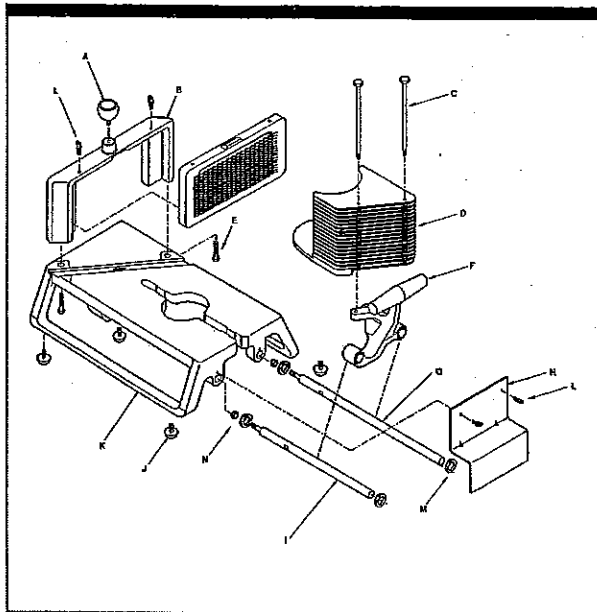
Cat. No.	Description	Blade Assembly	Case Pack	Ctn. C.F.	Ctn. Wgt. Lbs.	Ctn. C.M.	Ctn. Wgt. Kgs.
0694N	Tomato Pro, 3/16" Cut, Scalloped Blades	0648	1	1.20	13.5	0.04	6.2
0645N	Tomato Pro, 1/4" Cut, Scalloped Blades	0652	1	1.20	13.5	0.04	6.2

Tomato Pro Blade Assemblies: Straight Blades

Cat. No.	Description	No. of Blades	Case Pack	Ctn. C.F.	Ctn. Wgt. Lbs.	Ctn. C.M.	Ctn. Wgt. Kgs.
0653	Tomato Pro Blade Assembly, 3/16" Cut, Straight Blades	15	1	0.30	0.5	0.01	0.2
0654	Tomato Pro Blade Assembly, 1/4" Cut, Straight Blades	11	1	0.30	0.5	0.01	0.2
0656	Tomato Pro Blade Assembly, 3/8" Cut, Straight Blades	8	1	0.30	0.5	0.01	0.2

Tomato Pro Blade Assemblies: Scalloped Blades

Cat. No.	Description	No. of Blades	Case Pack	Ctn. C.F.	Ctn. Wgt. Lbs.	Ctn. C.M.	Ctn. Wgt. Kgs.
0648	Tomato Pro Blade Assembly, 3/16" Cut, Scalloped Blades	15	1	0.30	0.5	0.01	0.2
0652	Tomato Pro Blade Assembly, 1/4" Cut, Scalloped Blades	11	1	0.30	0.5	0.01	0.2
0647	Tomato Pro Blade Assembly, 3/8" Cut, Scalloped Blades	8	1	0.30	0.5	0.01	0.2



InstaSlice® Parts

Diagram Letter	Cat. No.	Description
A	379063	Knob Ball InstaSlice
B	379064	Bridge Casting Intos
C	379069	Pusher Head Bolt
D	379070-72	1/2", 3/8" & 1/4" Pusher Head Assembly
E	379073	Shoulder Bolt InstaSlice
F	379074	Handle Assembly
G	379075	Guide Rod-Long
H	379076	Table Stop
I	379077	Guide Rod-Short
J	379078	Rubber Foot
K	379079	Base InstaSlice
L	369211	Thumbscrew
M	379049	Washer - Guide Rod
N	353	Nut - Guide Rod
Not Shown	379065	Safety Guard InstaSlice

InstaSlice™

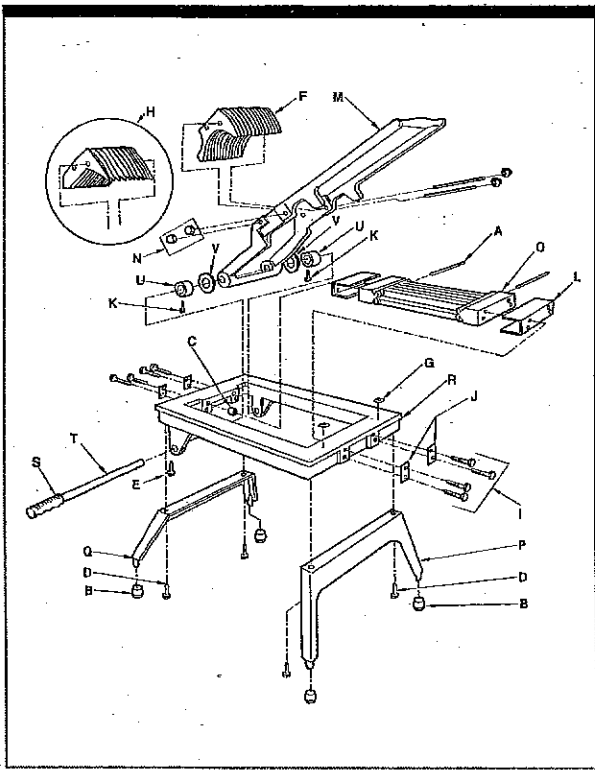
Cat. No.	Description	Blade Assembly	Case Pack	Ctn. C.F.	Ctn. Wgt. Lbs.	Ctn. C.M.	Ctn. Wgt. Kgs.
15105	InstaSlice 3/16" Cut, Scalloped Blades	15115	1	1.20	12.6	0.04	5.7
15205	InstaSlice 3/16" Cut, Straight Blades	15209	1	1.20	12.6	0.04	5.7
15102	InstaSlice 7/32" Cut, Scalloped Blades	15112	1	1.20	12.6	0.04	5.7
15202	InstaSlice 7/32" Cut, Straight Blades	15206	1	1.20	12.6	0.04	5.7
15103	InstaSlice 1/4" Cut, Scalloped Blades	15113	1	1.20	12.6	0.04	5.7
15203	InstaSlice 1/4" Cut, Straight Blades	15207	1	1.20	12.6	0.04	5.7
15104	InstaSlice 5/16" Cut, Scalloped Blades	15114	1	1.20	12.6	0.04	5.7
15204	InstaSlice 5/16" Cut, Straight Blades	15208	1	1.20	12.6	0.04	5.7

InstaSlice™ Blade Assemblies: Scalloped Blades

Cat. No.	Description	No. of Blades	Case Pack	Ctn. C.F.	Ctn. Wgt. Lbs.	Ctn. C.M.	Ctn. Wgt. Kgs.
15115	Scalloped Blade Assembly for 15105 (3/16")	16	1	0.30	7.9	0.01	3.6
15112	Scalloped Blade Assembly for 15102 (7/32")	13	1	0.30	7.9	0.01	3.6
15113	Scalloped Blade Assembly for 15103 (1/4")	12	1	0.30	7.9	0.01	3.6
15114	Scalloped Blade Assembly for 15104 (5/16")	8	1	0.30	7.9	0.01	3.6

InstaSlice™ Blade Assemblies: Straight Blades

Cat. No.	Description	No. of Blades	Case Pack	Ctn. C.F.	Ctn. Wgt. Lbs.	Ctn. C.M.	Ctn. Wgt. Kgs.
15209	Straight Blade Assembly for 15205 (3/16")	16	1	0.30	7.9	0.01	3.6
15206	Straight Blade Assembly for 15202 (7/32")	13	1	0.30	7.9	0.01	3.6
15207	Straight Blade Assembly for 15203 (1/4")	12	1	0.30	7.9	0.01	3.6
15208	Straight Blade Assembly for 15204 (5/16")	8	1	0.30	7.9	0.01	3.6



Onion King® Parts

Diagram Letter	Cat. No.	Description
A	047	Blade Block Pin
B	060	Rubber Foot (Old Style)
B	303	Rubber Foot, Deep (New Style)
C	0655	Neoprene Gasket
D	414	Screw, Fillister Head 1/4-20 x 3/4"
E	4422R	Screw, Square Head 1/4-20 x 3/8"
F	504	7/16" Pusher Head Assembly
F	505	1/4" or 1/2" Pusher Head Assembly
F	515	1/2" Pusher Head Assembly
G	506	Pusher Head Bumper
H	507	1/2" Pusher Head for Model 503SN
I	5116	Screw, Hex Head 1/4-20 x 2"
J	5117	Bearing Plate
K	5118	Screw, Square Head 1/4-20 x 2"
L	5120	Double Blade Block Shield for 7/16" & 1/4"
L	5121	Single Blade Block Shield for 7/16" & 1/2"
M	517	Pusher Head Handle Casting
N	519	Acorn Nut
O	520, 522	7/16", 1/4" Blade Block
O	521, 523	1/2", 1/2" Blade Block
P	525	Front Legs
Q	526	Rear Legs
R	554	Base Frame
S	555	Vinyl Grip
T	556	Pivot Rod
U	558	Pivot Rod Locking Collar
V	560	Nylon Washer
Not Shown	527	SS B/B Scr
Not Shown	568	Set Screw, Pivot Shaft 1/4-20 x 1/2"

Onion King®

Cat. No.	Description	Blade Assembly	Case Pack	Ctn. C.F.	Ctn. Wgt. Lbs.	Ctn. C.M.	Ctn. Wgt. Kgs.
500N	Onion King® 7/16" Cut	509	1	0.89	12.6	0.03	5.7
501N	Onion King® 1/4" Cut	511	1	0.89	12.3	0.03	5.6
502N	Onion King® 3/8" Cut	510	1	0.89	11.5	0.03	5.2
503N	Onion King® 1/2" Cut	512	1	0.89	11.4	0.03	5.2
503SN	Onion King® 1/2" Cut (For Jumbo Onions)	512	1	0.89	11.4	0.03	5.2

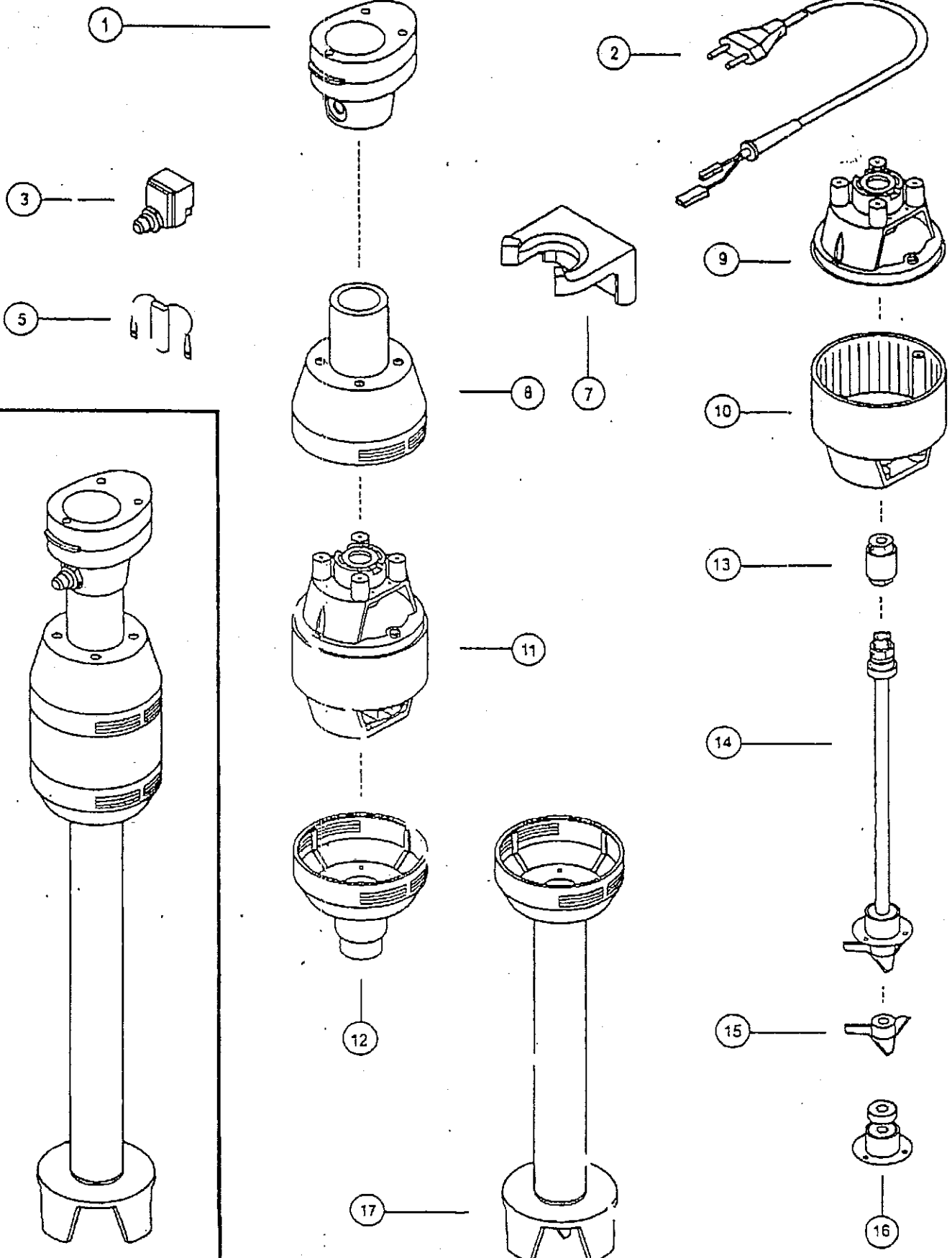
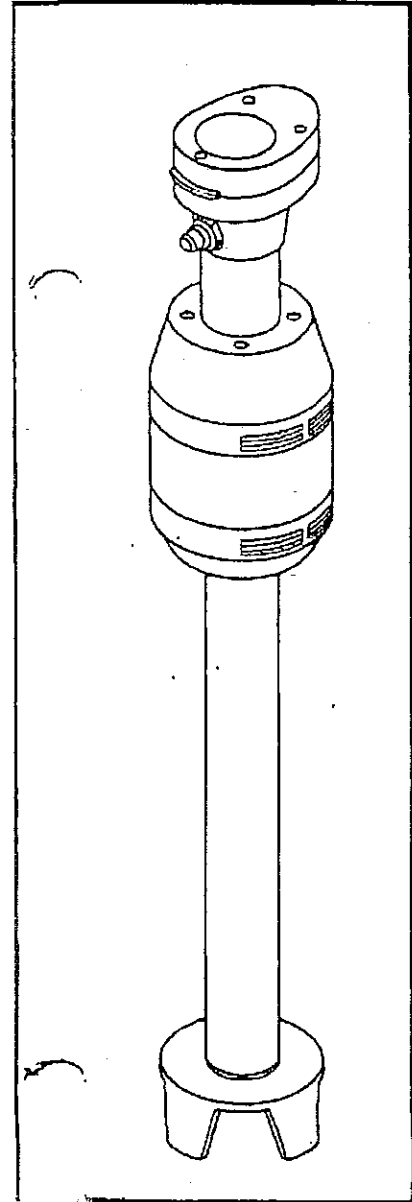
Onion King® Blade Assemblies

Cat. No.	Description	No. of Blades	Case Pack	Ctn. C.F.	Ctn. Wgt. Lbs.	Ctn. C.M.	Ctn. Wgt. Kgs.
509	Onion King® 7/16" Cut Blade Assembly	13	1	0.00	0.9	0.00	0.4
510	Onion King® 3/8" Cut Blade Assembly	7	1	0.00	0.6	0.00	0.3
511	Onion King® 1/4" Cut Blade Assembly	11	1	0.00	0.9	0.00	0.4
512	Onion King® 1/2" Cut Blade Assembly	6	1	0.00	0.6	0.00	0.3

15900 - 15901 - 15904

Mixer

Lincoln/Redco



No.	DESCRIPTION	SPARE PART #	15900	15901	15902	15903	15904
1a	Handle set	380000	✓	✓			✓
1b	Handle set	380001				✓	
	Handle set	380002			✓		
2	Connection cable set	380003	✓	✓	✓	✓	✓
3	Start button	380004	✓	✓		✓	✓
4	Start button selector	380005			✓		
5	Condenser	380006	✓	✓	✓	✓	✓
6	Speed control set	380007			✓	✓	
7	Wall support set	380008	✓	✓	✓	✓	✓
8	Upper hood set	380009	✓	✓	✓	✓	✓
9	Commutator side cover	380010	✓	✓	✓	✓	✓
10	Motor central frame	380011	✓	✓	✓	✓	✓
11a	Motor set	380012	✓	✓			✓
11b	Motor set	380013				✓	
11c	Motor set	380014			✓		
12a	Lower hood set	380015	✓				✓
12b	Lower hood set	380016		✓			
12c	Lower hood set	380017			✓		
13a	Coupling set	380018	✓	✓			✓
13b	Coupling set	380019			✓		
14a	Transmission shaft set	380020	✓				
14b	Transmission shaft set	380021					✓
c	Transmission shaft set	380022		✓			
14d	Grinder arm shaft set	380023			✓		
15	Crushing turbine	380024	✓	✓	✓		✓
16a	Bearings - grommets	380025	✓				✓
16b	Bearings - grommets	380026		✓			
16c	Bearings - grommets	380027			✓		
17a	Grinder arm set	380028					✓
17b	Grinder arm set	380029	✓				
17c	Grinder arm set	380030		✓			
17d	Grinder arm set	380031			✓		
18	Reducing frame set	380032				✓	
19	Transmission set	380033			✓	✓	
20	Whisk	380034			✓	✓	
21	Mixer arm set	380035				✓	
22	Sleeve set 'A'	380036			✓		
23	Reducing frame set	380037			✓		
24	Frames set	380038			✓		
25	Mixer arm set	380039			✓		